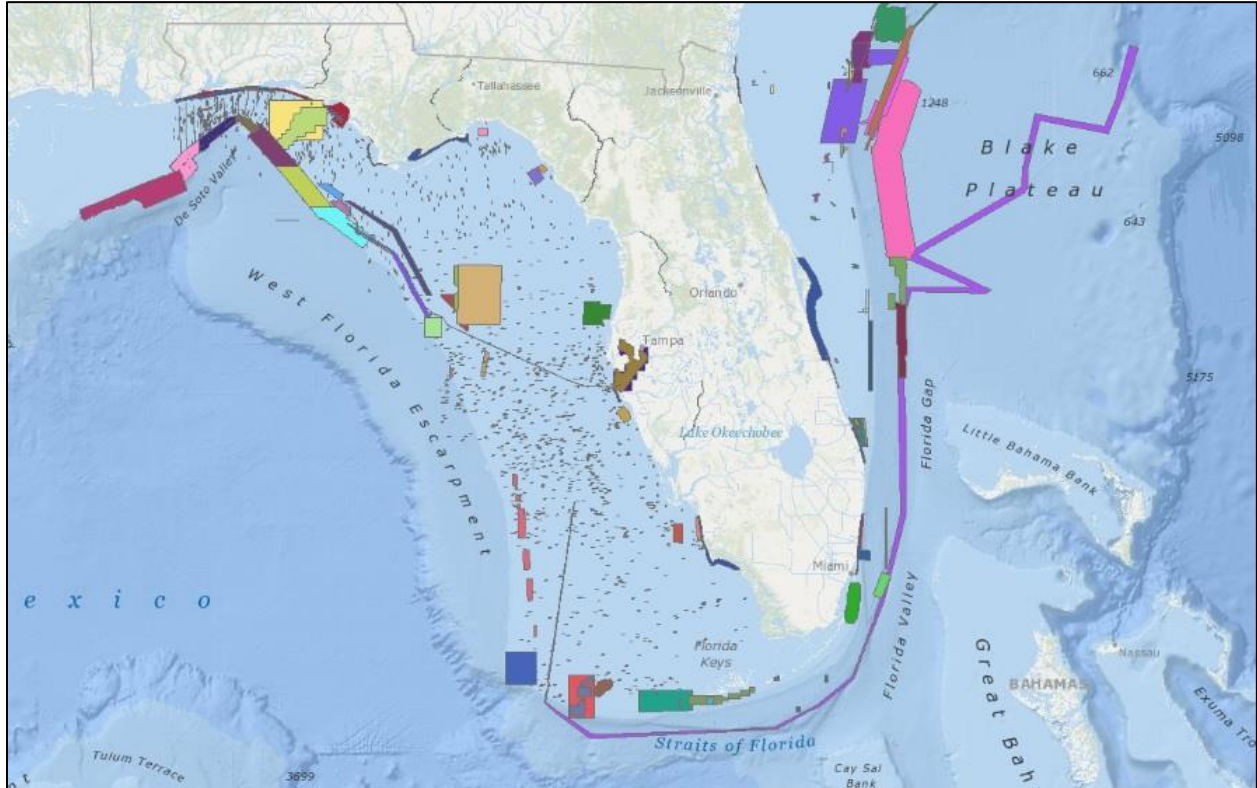


# Florida Coastal Mapping Program

January 9-10, 2018 Workshop – FWRI – St. Petersburg



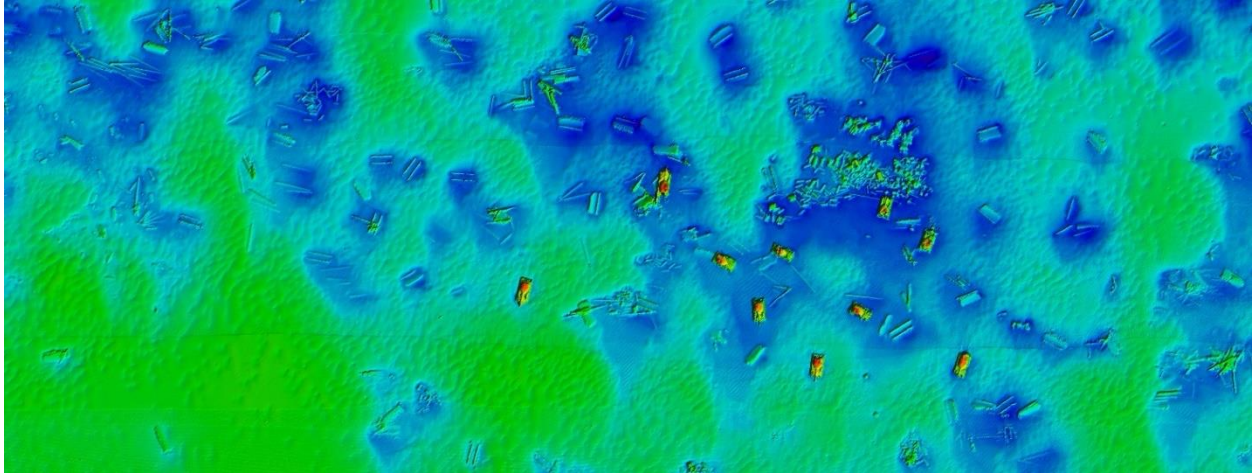
Example depiction of Florida coastal seafloor areas that have been mapped to date. Credit: FWRI.

**Activities:** A 2-day workshop designed to bring all relevant partners up to date on a 12-month effort to assemble current and past efforts to map Florida’s coastal seafloor. Participants will vet this information and use it to jointly develop a plan of action to fill priority gaps and other areas within Florida’s coastal waters for mapping. [Agenda coming soon]

**Outcomes:** The expected outcomes of this effort will be multi-year strategy to develop a Florida Coastal Seafloor Mapping Program that would fill critical gaps with a larger goal of completing high resolution geophysical and optical mapping for all of Florida’s coastal waters. [Link to FWRI map coming soon]

**Why map?** Geologic and geophysical data of the coastal seafloor are essential for producing benthic habitat maps, understanding mineral resource distribution and examining sea-level rise indicators, all of which are essential for informed decision making of coastal zone management, navigation, and coastal resilience planning. The State of Florida has one of the most valuable coastal zone in the nation (over \$30 billion in revenue per year), the greatest number of recreational boats and saltwater fisherman in the US, and one of the largest concentrations of people living in the coastal zone. A 2007 Florida marine mapping workshop sponsored by the U.S. Geological Survey (USGS), Florida Department of Environmental Protection (FDEP), and Southeastern Regional Partnership for Planning and Sustainability concluded that while mapping coastal resources was a top priority, the lack of a coordination, clear set

of priorities, and overarching mapping plan was impeding progress (SERPPAS; Robbins et al. 2008). Little has been done since 2007 to follow-up on the workshop recommendations for improving coordination.



Benthic map of St. Pete Beach Reef. Credit: Murawski, S., Lembke C., and Gray, J. St Pete Beach Reef [map]. June 2016. 0.25x0.25-m grid. "St. Pete Beach Reef Data Products." Funding provided by the National Fish and Wildlife Foundation (NFWF): GEBF Grant #45892. Last updated October 2016. <<http://www.marine.usf.edu/scamp/data-products/st-pete-beach-reef>> (Accessed 07.06.2017)

**Why now?** There have been a number of new benthic mapping efforts undertaken in Florida by federal, state, and academic institutions. In addition, there have been on-going improvements in seafloor mapping technologies, infrastructure, and mapping server capabilities, all of which can increase options and bring costs down. A revitalized effort to examine the current state of Florida's coastal seafloor mapping is overdue and needed to help coordinate planned mapping efforts, reduce redundancy, help set priorities, and catalyze new seafloor mapping efforts to make Florida a national leader.

**Partners:**

